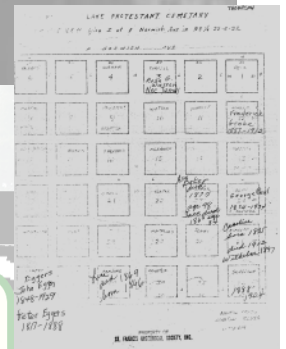
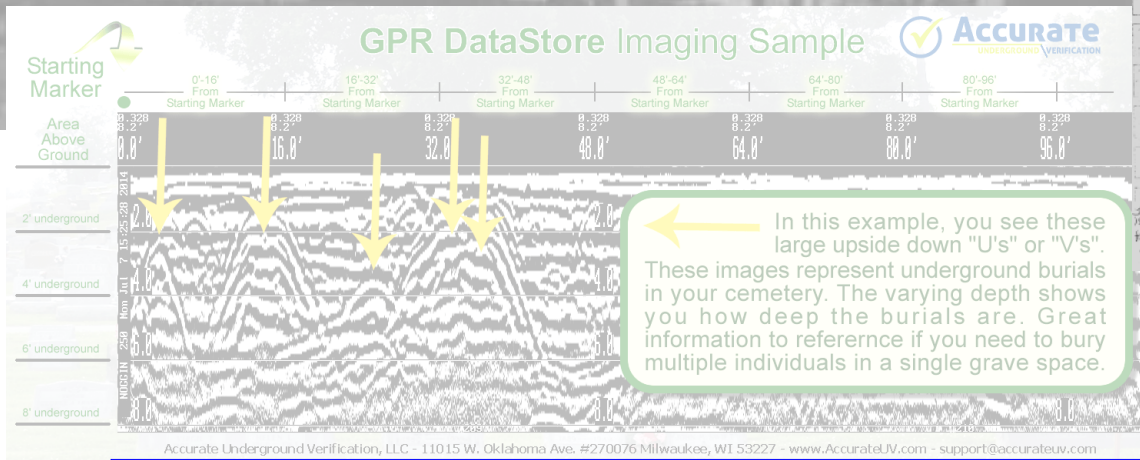


Preliminary Results 2017 Ground Penetrating Radar Study

Lake Protestant Cemetery

This past July more than 120 previously unknown possible burials were found at the Lake Protestant Cemetery with the help of a relatively new technology called Ground Penetrating Radar (GPR). The cemetery is located in St. Francis at the corner of Barland and Norwich avenues.

Presented by Randy Borland and Anna Passante



SF Historical Society - General Meeting
October 21, 2017 - 9:30 a.m.

St. Francis Civic Center, 3400 E. Howard Ave.

Refreshments Served